



Highly dynamic
open-variant beam system
with AI CFK-composite
material-technology

Made in Germany

Beam System for use in a wide range of working spaces

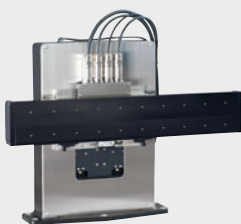
Particularly well-suited for use in Assembly and Process automation

System Concept

- ▶ Flexible: 72 System variations are possible
- ▶ Ready to install (plug & play) with optional servo and control system upon request
- ▶ Low Maintenance, High Availability
- ▶ Cleanroom Ready
- ▶ Z-axis can be rotary or linear
- ▶ Active vibration suppression enables faster positioning

Also available

Pick & Place



Gantry



X-Y Table

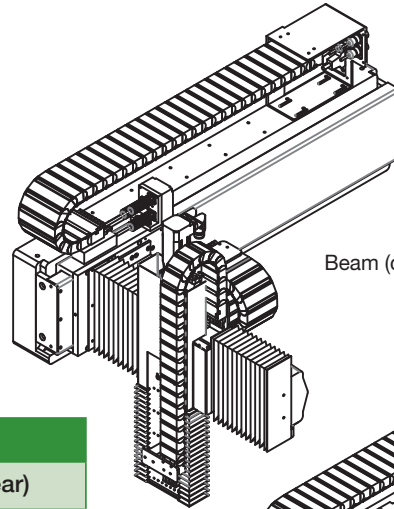


YASKAWA Europe GmbH
 Drives & Motion Division
 Hauptstr. 185
 65760 Eschborn
 Germany
 Telephone: + 49 (0) 6196-569 300
 Fax: + 49 (0) 6196-569 398
 info@yaskawa.eu.com
 www.yaskawa.eu.com

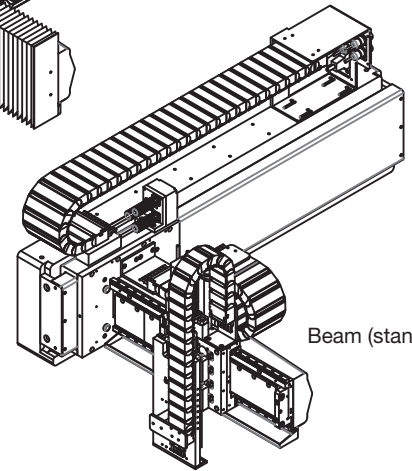


Basic Specifications

Performance data	
Positioning accuracy	0.01 mm
Repeatability	0.002 mm
Max. velocity	4.0 m/s
Max. acceleration	4 g



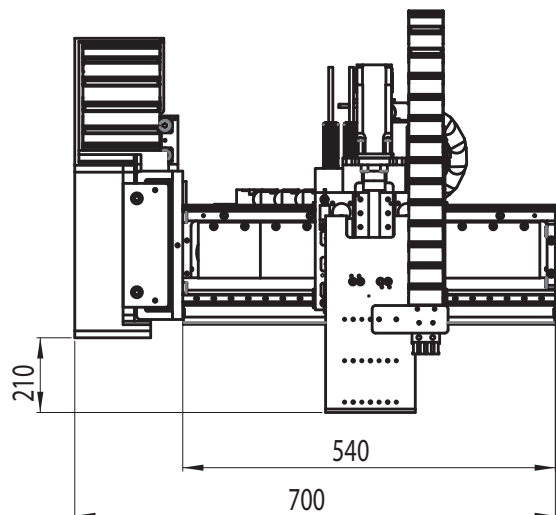
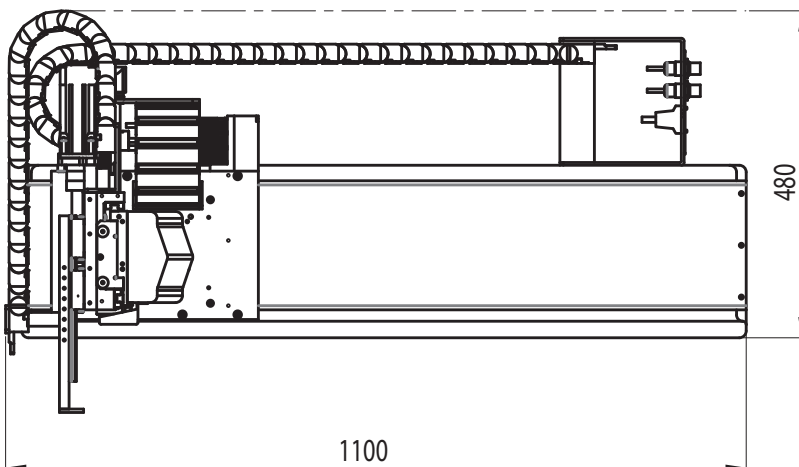
Beam (cleanroom-suitable)



Beam (standard)

Technical data				
Axis	X-	Y-	Z- (rotary)	Z- (linear)
Max. stroke length	320 mm	650 mm	200 mm	100 mm
Max. payload	11 kg	27 kg	5 kg	
System weight	86 kg			

Dimensions



Additional configurations upon request